



Polytech India Pvt. Ltd.
AN ISO 9001 : 2015 CERTIFIED COMPANY

www.vamcan.com

STOCK &
SHAPES
CUSTOM
CAST
PRODUCTS



"Innovative >>>>"

Engineering Solutions for a Stronger,
More Sustainable **Future!"**



With a legacy spanning nearly 30 years, our company has evolved from its origins in aluminum & steel machined components to become a leader in the nylon manufacturing industry. Our journey of innovation and excellence led us to establish a state-of-the-art nylon manufacturing unit, where we specialize in producing a diverse range of high-quality nylon components. We offer custom casting solutions and a comprehensive product line, including cast nylon sheets, rods, tubular bars, sheaves, discs, rings, gears and other components tailored to meet the needs of various industries.

For over three decades, we have been at the forefront of engineering nylon manufacturing, serving sectors such as paper, textiles, packaging, automotive, sugar, and chemicals. Our products are renowned for their high strength, precise designs, dimensional accuracy, and long service life, ensuring reliable performance across numerous applications. Our commitment to quality and customer satisfaction has positioned us as a trusted partner in delivering durable cast nylon solutions that enhance efficiency and productivity.

Why? We Are The Best!

Proven Expertise: With over 30 years in the industry, we bring unmatched knowledge and experience to every project.

Exceptional Quality: Our cast nylon and custom components are renowned for their strength, precision, and longevity.

Comprehensive Solutions: From in-stock items to custom casting and metal materials, we offer a wide range of products and services to meet diverse needs.

Global Sourcing: We procure materials from world-class vendors, ensuring the highest quality standards.

Customer-Centric Approach: We tailor our solutions to your specific requirements, providing personalized service and support.





Vision & Mission

To be the leading global provider of high-quality engineering nylons and machining component solutions, recognized for our innovation, quality, and customer-centric approach. We envision a future where our products and services set the benchmark for excellence across diverse industrial sectors.

Our mission is to deliver superior engineering nylon and machining components that exceed industry standards and meet the unique needs of our clients. We strive to provide excellence in every product and service, ensuring reliability, precision, and satisfaction for our customers.

Product Range

- **Cast Nylon Sheets & Rods:** Engineered for exceptional durability and performance in demanding environments.
- **Tubular Bars:** Offering superior strength and flexibility for diverse industrial uses.
- **Nylon Sheaves, Discs, & Rings:** Designed for precision and reliability in mechanical systems.
- **Gears & Custom Cast Components:** Tailored to meet specific engineering requirements with unparalleled accuracy. In addition to our in-stock items, we source high-quality metal materials from global manufacturers.
- **Our offerings include:** Aluminium, Stainless Steel & Special Steel: for High-grade materials for specialized applications.

Any other requirement from customer on turn key basis



“Collaborate
innovate
Succeed”
«««»»»

I am proud to present our extensive range of engineering nylons and custom manufacturing solutions. With over 30 years of experience, we have positioned ourselves as leaders in the industry, offering products that meet the highest quality standards across various sectors, including paper, textile, packaging, automotive, sugar, and Earthmover industries.

Our commitment to excellence drives us to ensure that every product we manufacture is characterized by high strength, precise designs, and dimensional accuracy. We understand that our clients rely on us for solutions that not only fit their specifications but also deliver long service life and trouble-free operations.

Thank you for trusting us as your partner in engineering nylons & Metal solutions. Together, we will push boundaries and create remarkable products that enhance your operations.

Gurmeet Singh
Director



“Innovating for Industry,” Success

Dear Valued Customers,

Innovation is at the heart of what we do. As Director, I would like to highlight our dedication to custom casting and our continual pursuit of advanced manufacturing techniques. We provide tailored solutions for high-volume components, ensuring that each custom part we create meets your specific needs with utmost precision and efficiency.

By sourcing materials from world-class vendors and leveraging our advanced production capabilities, we ensure that our cast nylon components are not only durable but also cost-effective. Our design house works closely with our clients to develop custom solutions that maximize performance and reliability.

Thank you for considering VAMCAM as your trusted partner in engineering nylon manufacturing. We look forward to collaborating with you to meet your unique requirements.

Avanish Kumar
Director



“The visionary Behind the Industry”

Dear Valued Customers and Partners,

As the COO of our esteemed company, I am honored to share with you the progress and future direction of our organization. Over the past three decades, we have grown from a humble beginning in aluminum and steel machined components to become a leader in the engineering nylon manufacturing industry. This transformation reflects our unwavering commitment to innovation, quality, and customer satisfaction.

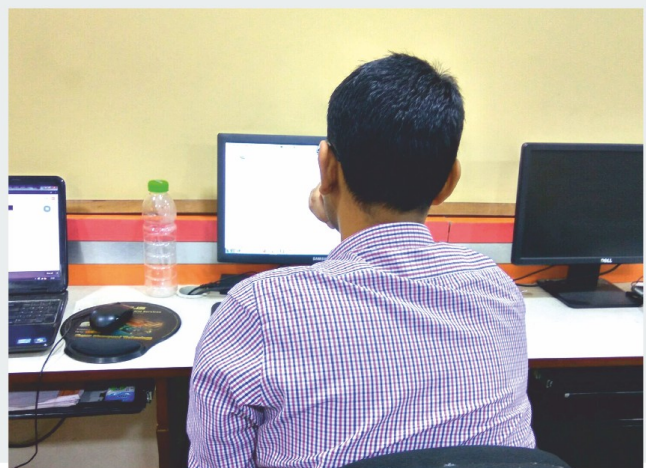
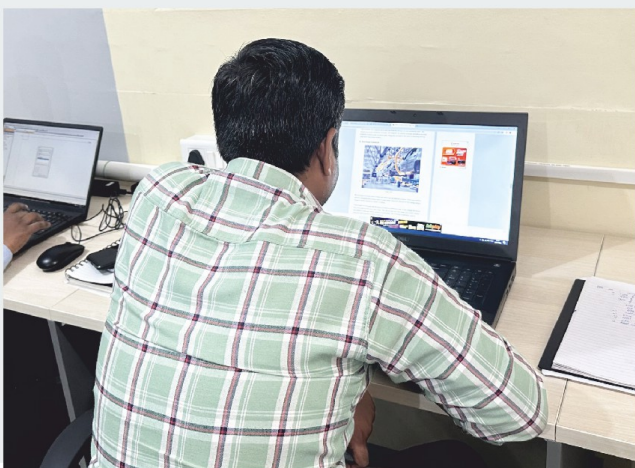
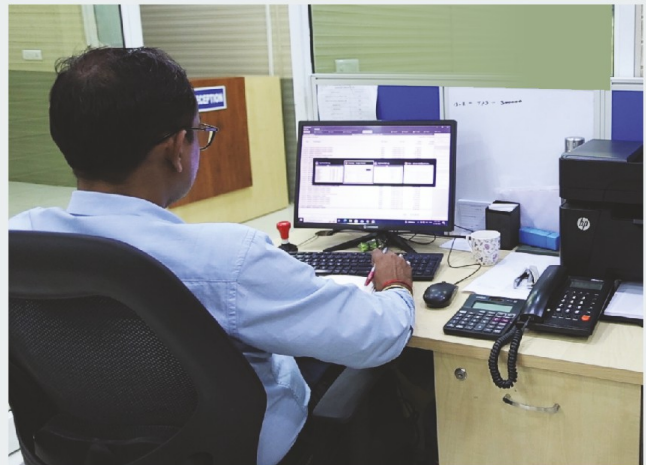
Our success is rooted in our ability to adapt and anticipate the needs of a rapidly changing market. I am proud to oversee our operations, production, and marketing efforts, ensuring that every aspect of our business aligns with our core values and strategic goals. Our state-of-the-art manufacturing facilities and talented team enable us to produce high-quality cast nylon products that serve a diverse range of industries, from paper and textiles to automotive and chemicals.

Looking ahead, my vision is to further expand our capabilities and reach, driving growth through continuous improvement and strategic partnerships. We are committed to investing in cutting-edge technologies and sustainable practices that enhance our product offerings and contribute positively to the communities we serve.

Manish Rohilla
COO

Admin Block

Our Admin Block serves as the hub of our operations, where our dedicated team coordinates every aspect of the manufacturing process. From procurement of high-quality raw materials from world-class vendors to managing customer orders and ensuring timely delivery, our administrative team plays a critical role in our success. The Admin Block is also where we focus on continuous improvement, leveraging our experience and industry knowledge to enhance our processes and better serve our customers.



Our Machining Production House



State-of-the-Art Production Facility

Our production facility is equipped with cutting-edge technology and machinery that allow us to efficiently and effectively manufacture a wide range of cast nylon products.

Key highlights of our production capabilities include:

- Advanced casting techniques for superior durability
- Automated machinery for precision and efficiency
- Scalable production options to accommodate both small and large orders

A wide-angle photograph of a modern industrial production facility. The space is vast, with a high ceiling supported by a complex network of steel beams. Numerous industrial machines, primarily white with orange accents, are arranged in long, parallel rows on the floor. The floor is a light gray, polished surface with bright yellow safety lines marking the aisles. Overhead, a series of long, bright fluorescent lights illuminate the workspace. The overall atmosphere is one of a clean, organized, and technologically advanced manufacturing environment.

State-of-the-Art Production Facility

With a highly skilled workforce and a commitment to continuous improvement, our production house ensures that we not only meet deadlines but also maintain the highest quality standards. This enables us to deliver customized solutions that cater to the evolving needs of our clients in diverse industries.

In House

VMC Machining Facilities

| S. No. | Make | Bed Size |
|--------|--------------------------------|---------------------|
| 1 | HAAS Model VF2 | 700X500X500 mm |
| 2 | BFW CHAKRA 60+ (5 AXIS) | 1100 X 600 X 600 mm |
| 3 | BFW Model X Tron 1155 (5 AXIS) | 1100 X 600 X 600 mm |
| 4 | BFW CHAKRA 60+ | 1100 X 600 X 600 mm |
| 5 | Kaizen Model 1160DM | 1100 X 600 X 600 mm |
| 6 | BFW Xtron 955 | 900 X 500 X 500 mm |
| 7 | BFW Xtron 544 | 550 X 400 X 400 mm |
| 8 | BFW Dhruva+ | 550 X 400 X 400 mm |
| 9 | BFW Xtron 955 | 900 X 500 X 500 mm |
| 10 | COSMOS CVM 1160 | 1100 X 600 X 600 mm |
| 11 | COSMOS CVM 1160 | 1100 X 600 X 600 mm |
| 12 | COSMOS CVM 1160 | 1100 X 600 X 600 mm |
| 13 | HONTEN S650A | (PALLET CHANGER) |
| 14 | HONTEN S650A | (PALLET CHANGER) |
| 15 | BFW AGNI BMV 45++ (4 AXIS) | 800 X 500 X 500 MM |
| 16 | BFW AGNI BMV 45++ | 800 X 500 X 500 MM |
| 17 | BFW AGNI BMV 45++ | 800 X 500 X 500 MM |
| 18 | BFW AGNI BMV 45++ | 800 X 500 X 500 MM |
| 19 | BFW AGNI BMV 45++ | 800 X 500 X 500 MM |
| 20 | BFW AGNI BMV 45++ | 800 X 500 X 500 MM |
| 21 | BFW AGNI BMV 45++ | 800 X 500 X 500 MM |
| 22 | BFW AGNI BMV 45++ | 800 X 500 X 500 MM |
| 23 | BFW AGNI BMV 45++ | 800 X 500 X 500 MM |
| 24 | BFW AGNI BMV 45++ | 800 X 500 X 500 MM |
| 25 | BFW AGNI BMV 45++ | 800 X 500 X 500 MM |



In House CNC Machine

| S. No. | Make | Bed Size |
|--------|--------------------|-----------------|
| 1 | BFW NEO+ | D200 X L 400 MM |
| 2 | BFW NEO+ | D200 X L 400 MM |
| 3 | JYOTI Dx200 | D200 X L 500 MM |
| 4 | JYOTI DX200 | D200 X L 400 MM |
| 5 | LMW SMART ULTRA | D200 X L 460 MM |
| 6 | LMW SMART ULTRA | D200 X L 460 MM |
| 7 | CNC ROUTER MACHINE | 3000 X 1500 MM |



In House Tool Room Facilities

| S. No. | Make | Bed Size |
|--------|--|----------|
| 1 | MILLING MACHINE - WMS ISO 150 UNIVERSAL | 01 NOS. |
| 2 | MILLING MACHINE M1TR | 05 NOS. |
| 3 | TURNING -10 FFET LATHE | 02 NOS. |
| 4 | TURNING -6 FFET LATHE | 02 NOS. |
| 5 | SURFACE GRINDER -500 MM | 01 NOS. |
| 6 | SURFACE GRINDER -750 MM | 01 NOS. |
| 7 | CYLINDRICAL GRINDING MACHINE-UPTO 1 MTR. | 01 NOS. |
| 8 | PANNEL SAW | 02 NOS. |





CNC & VMC Program Section



Our VMC technology enables precise vertical cutting and drilling, ideal for detailed work on a variety of materials. With high-speed spindles and cutting-edge software, our VMC machines produce components with excellent surface finishes and tight tolerances. This capability allows us to handle both small-scale and large-scale production, delivering consistent,



“Superior
Quality,
unmatched
value.”

Final Inspection

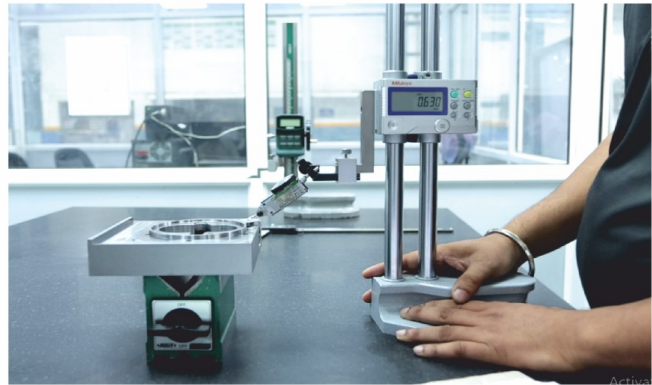
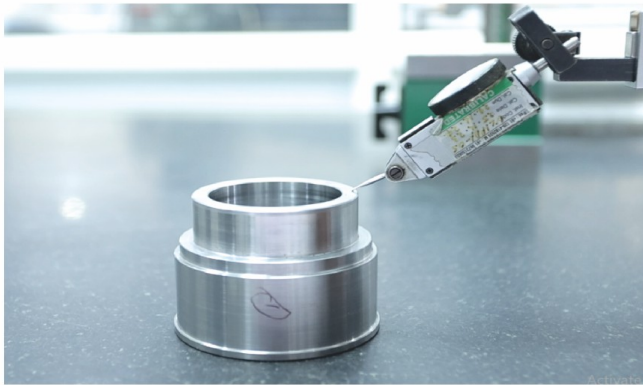
Quality is our top priority, and our rigorous final inspection process ensures that every product meets the highest standards before it reaches our clients. Utilizing advanced measurement tools and thorough checks, we verify each component's dimensions, surface finish, and functionality. This meticulous attention to detail guarantees that every part we produce is flawless, reliable, and ready for immediate use.



CMM

Coordinate Measuring Machine

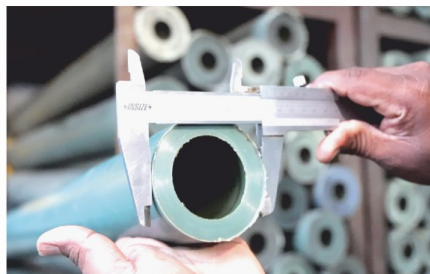
To ensure the highest standards of quality and precision, we utilize state-of-the-art Coordinate Measuring Machines (CMM) in our manufacturing process. This advanced technology allows us to achieve exceptional accuracy in the production of components, ensuring that every piece meets the stringent specifications required by our clients. With CMM, we guarantee precise dimensional analysis, which is crucial for maintaining the integrity and performance of our products.



Quality Test

Quality Assurance: Our Commitment to Standards

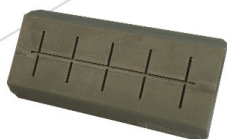
At OUR ORGANISATION, quality is our top priority. We implement stringent quality testing procedures at every stage of our manufacturing process, ensuring that our engineering nylons and custom components meet and exceed industry standards.





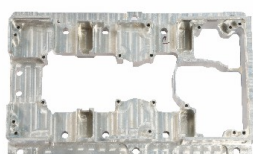
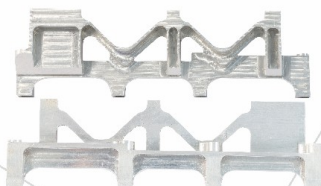
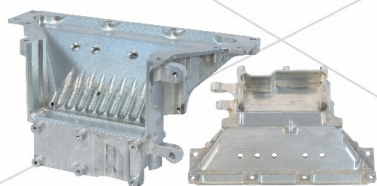
Products

Nylon





Aluminium



Stainless Steel



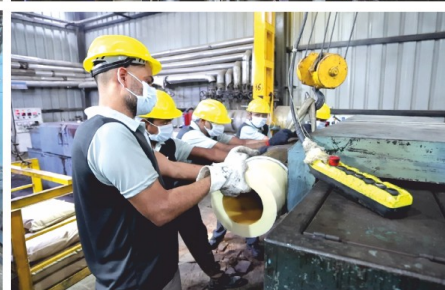


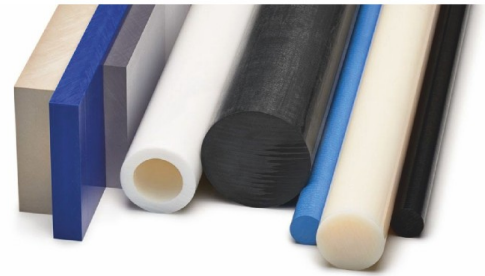
Our Nylon Manufacturing Unit



Key Machines and Technologies:

- Sheet Casting Machine
- Rod Chamber
- Centrifugal Tube Machine
- Annealing & Conditioning Chamber
- Steam Boiler





Advanced Machinery for
High-End Engineering

Nylon Rods and Sheets

At VAMCAN POLYTECH INDIA PRIVATE LIMITED, our commitment to quality and innovation is reflected in our use of cutting-edge machinery for the production of high-end engineering nylon rods and sheets. Our facility is equipped with state-of-the-art machines that ensure precision, efficiency and the highest standards of manufacturing excellence.





Vamlon® VC 211 PA6 (Natural)

Vamlon VC 211 PA6 shows a great combination of mechanical strength, stiffness, toughness, mechanical damping properties, as well as creep and wear resistance. In addition to these characteristics, this particular grade possesses excellent electrical insulating properties and outstanding chemical resistance capabilities. For these reasons, Vamlon VC 211 PA6 is often referred to as a “general purpose” grade for mechanical construction and maintenance applications. Vamlon VC 211 PA6 stock shapes comes in Natural Color



Vamlon® VC 212 PA6 (Black)



Vamlon VC 212 PA6 shows a great combination of mechanical strength, stiffness, toughness, mechanical damping properties, as well as creep and wear resistance. In addition to these characteristics, this particular grade possesses excellent electrical insulating properties and outstanding chemical resistance capabilities. For these reasons, Vamlon VC 212 PA6 is often referred to as a “general purpose” grade for mechanical construction and maintenance applications. Vamlon VC 212 PA6 stock shapes comes in Black Color

Available Geometries



Tube Bar



Rod



Plate

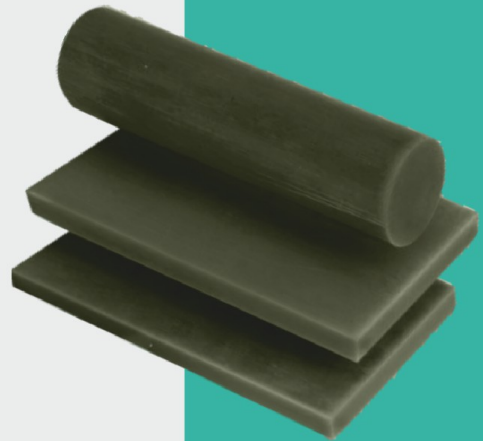




Vamlon®

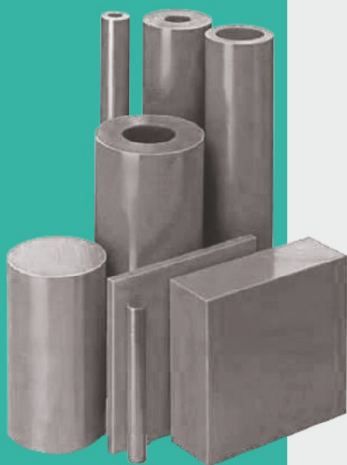
Oilon Green (VOG) 210 PA6

Vamlon Oilon Green 210 PA6 contains specialized oil specifically formulated for applications involving unlubricated, highly loaded, and slowly moving parts. A self-lubricating cast nylon 6 that displays high mechanical strength, stiffness, hardness, and toughness, great sliding properties, high mechanical damping capabilities, and exceptional electrical insulating properties.



Vamlon®

MD PA6



Vamlon MD Polyamide PA6 contain finely divided particles of Molybdenum Disulphide (MoS_2) to increase their load bearing capabilities and maintaining the impact resistance inbuilt in cast nylon products. This grade in particular controls an ideal combination of strength and toughness, while also show excellent mechanical and electrical properties. This powerful combination of characteristics makes Vamlon MD PA6 an ideal material for use in gears, bearings, sprockets, and sheaves throughout the construction and heavy equipment markets. in gears, bearings, sprockets, and sheaves throughout the construction and heavy equipment markets. in gears, bearings, sprockets, and sheaves throughout the construction and heavy equipment markets.

Available Geometries



Tube Bar



Rod



Plate





Vamlon®

SL PA6

Vamlon SL Polyamide PA6 is a solid lubricant-filled, proprietary cast nylon formulation that displays outstanding friction behavior, superior self-lubricating properties, maximum wear resistance, and excellent dynamic loadbearing capacities that are up to five times higher than conventional cast nylon grades. As the most wear-resistant nylon available, Vamlon SL PA6 components excel in higher velocity, unlubricated moving parts requiring larger sizes. With its exceptional wear resistance and a service life up to 10 times longer than standard nylons, the material is a favored solution for bearings, gears, wear pads, pulleys, sheaves, bushings, valve seats, and seals.



Vamlon®

VC 201 PA6 (Blue)



Vamlon VC 201 PA6 (Blue) shapes are ideal for a variety of bearing and structural applications. Distinguishable by its blue color, this grade is characterized by outstanding mechanical strength, rigidity, hardness, and toughness. The material also exhibits great sliding properties, excellent electrical insulation properties, and outstanding wear resistance. Due to these characteristics and properties, Vamlon VC 201 PA6 (Blue) is often favored as a solution for conveyor, gear wheels, racks, pinions and custom parts.

Available Geometries



Tube Bar



Rod



Plate



Ultrasonic Testing Machine



Lab Testing

Accurate answers,
rapid results.

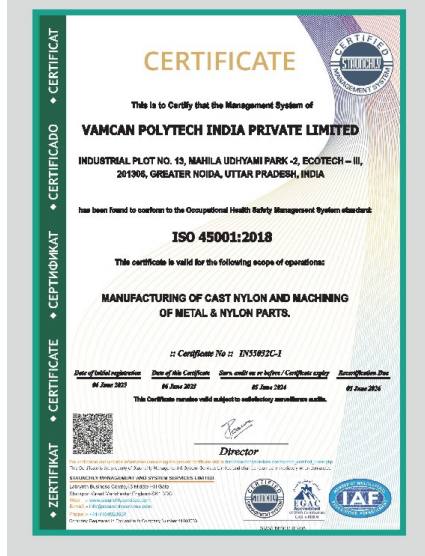


Our Certificates

VAMCAN is

A CERTIFIED ISO 9001 ORGANIZATION.

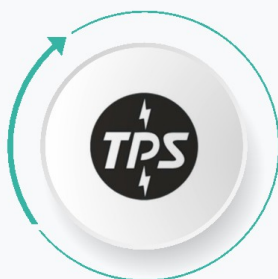
There are many types of certificates that companies may use, including certificates of incorporation, certificates of origin and certificates of registered company information:





Our Clientele

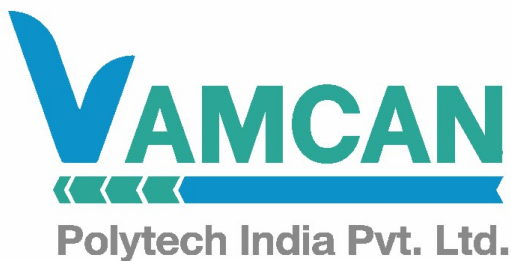
Our products and services are highly sought after by leading companies across multiple industries. From automotive giants to chemical innovators, our clientele spans a wide array of sectors that rely on our expertise and high-quality products. We are dedicated to building lasting partnerships by consistently delivering reliable and efficient solutions.



Unit: 01



Unit: 02



Unit-01 : Plot No.-13, Mahila Udhyaami Park-II,
Ecotech-III, Greater Noida, Gautam Budh Nagar,
Uttar Pradesh-201306

Unit-02 : Plot No.-99, Udhhyog Kendra,
Ecotech-III, Greater Noida, Gautam Budh Nagar,
Uttar Pradesh-201306

Mob. : +91-9810183265, 9557711852
Phone : 0120-6251854
E-mail : vamcan.india@gmail.com,
info@vamcan.com

www.vamcan.com

